

NRG Oncology Biospecimen Bank Kit Instruction Packet (4.3.15)

Instructions for NRG Oncology Biospecimen Bank- San Francisco Biospecimen Collection (as specified by the protocol).

FFPE Specimen Plug Kit Collection
Frozen Tissue Kit Instructions
Blood Collection Kit Instructions
Urine Collection Kit Instructions
CSF Collection Kit Instructions
Buccal Scrapings Specimen Kit Instructions

Shipping Instructions:

US Postal Service Mailing Address: <u>Use only for non-urgent ambient specimens- FFPEs, slides, blocks:</u>	Courier Address (FedEx, UPS, etc.): <u>For Frozen, Urgent or Trackable Specimens:</u>
NRG Oncology Biospecimen Bank- San Francisco UCSF- Box 1800 2340 Sutter St, room S341 San Francisco, CA 94143-1800	NRG Oncology Biospecimen Bank- San Francisco University of California San Francisco 2340 Sutter St, room S341 San Francisco, CA 94115

- ❑ Include all required specimen paperwork in pocket of biohazard bag.
- ❑ Check that the Specimen Transmittal (ST) Form has been completely filled out. Use NRG labels for the top box (Study & Case)
- ❑ Only send samples that have a case # assigned. If the patient does not have a case number it means they are not registered yet. Contact NRG Oncology data managers with questions regarding registration.
- ❑ Check that all samples are labeled with the NRG (or RTOG) Study, case number, and date of procedure.

- ❑ **FFPE Specimens:**
 - All FFPE submission must include the H&E slide that matches the samples. We cannot accept FFPE submissions without the H&E slide.
 - If patients consent to banking DO NOT ship us FFPE specimens with a return request. We cannot accept or bank samples that we cannot keep. Always send what can be banked (duplicate H&Es, Blocks or punches or unstained). We can punch and return blocks if noted in the protocol. You may indicate that you want us to punch and return the block on the ST form and you can include a return request form and return airbill with the submission. Punch kits can be requested from us by email (NRG@ucsf.edu) if sites wish to punch the block themselves.
 - Slides should be shipped in plastic slide holder/slide box. Place a small wad of padding in top of the container. If you can hear slides shaking it is likely that they will break during shipping.
 - DO NOT ship slides in cardboard slide flats.
 - FFPE Blocks can be shipped in a plastic block holder or wrapped with paper or placed in a paper envelope, and placed in a cardboard box with padding. Do not wrap blocks with bubble wrap or gauze. Place padding in top of container so that if you shake the container the blocks are not shaking. If you can hear blocks shaking they may break during shipping. During warm weather months the use of cold packs is recommended to prevent wax from melting.
 - Slides, Blocks, or Plugs can be shipped ambient or with a cold pack either by United States Postal Service (USPS) to the USPS address (94143) or by Courier to the Street Address (94115). **Do NOT ship on Dry Ice.**
 - Urgent overnight shipments (central review) should always be sent by Courier.

- **Frozen Specimens:**
 - Multiple cases may be shipped in the same cooler, but make sure each one is in a separate bag and clearly identified.
 - Only collect specimens as noted in the section 10 of the protocols. Each protocol may have specific specimen requirements.
 - Place specimens and absorbent shipping material in Styrofoam cooler filled with dry ice (at least 7 lbs). There should be plenty of dry ice under and above the specimens. If the volume of specimens is greater than the volume of dry ice then ship in a larger Styrofoam box, or two separate boxes. Any Styrofoam box can be used, as long as it is big enough.
 - Specimens received thawed due to insufficient dry ice or shipping delays will be discarded and the site will be notified.
 - Send frozen specimens via overnight courier to the address above. Frozen specimens should only be shipped Monday through Wednesday (Monday-Tuesday for Canada) to prevent thawing due to delivery delays. Saturday or holiday deliveries cannot be accepted as our building is closed. Samples can be stored frozen at -80°C until ready to ship.

- **For Questions regarding collection/shipping please contact the NRG Oncology Biospecimen Bank- San Francisco by e-mail: NRGBB@ucsf.edu or phone: 415-476-7864 or Fax: 415-476-5271.**
- **For forms and additional information please visit our website <http://NRGBB.UCSF.EDU>**

APPENDIX xx

NRG FFPE SPECIMEN PLUG KIT INSTRUCTIONS

This Kit allows sub-sampling of an FFPE block for submission to the NRG Oncology Biospecimen Bank- San Francisco. The plug kit contains a shipping tube and a punch tool.



Step 1

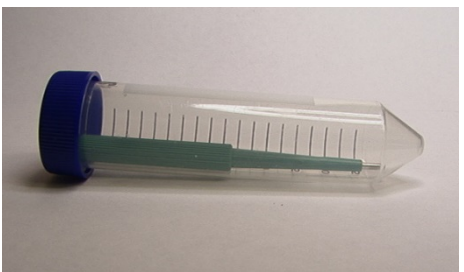
If the block is stored cold, allow it to equilibrate for 30 minutes at room temperature. Place the punch tool on the paraffin block over the selected tumor area. (Ask a pathologist to select area with tumor.) Push the punch into the paraffin block. Twist the punch tool once around to separate the plug from the block. Then pull the punch tool out of the block. The punch should be filled with tissue sample.



Step 2

Label the punch tool with the proper specimen ID and Block ID. DON'T remove specimen from the punch.

Use a separate punch tool for every specimen. Call or e-mail us if you have any questions or need additional specimen plug kits.



Step 3

Once punch tool is labeled, place in shipping tube and mail to address below. Please do not mix specimens in the same tube.

We will remove core specimen from the punch, embed in a paraffin block, and label with specimen ID.

***NOTE:** If your facility is uncomfortable obtaining the plug but wants to retain the tissue block, please send the entire block to the NRG Oncology Biospecimen Bank- San Francisco and we will sample a plug from the block and return the remaining block to your facility. Please indicate on the ST form the request to perform the plug procedure and return of the block. Include a return request form with a return airbill. **Ship specimen plug kit, specimen in punch tool, and all paperwork to the address below. For Questions regarding collection/shipping or to order an FFPE Specimen Plug Kit, please contact the NRG Oncology Biospecimen Bank- San Francisco by e-mail: NRG_BB@ucsf.edu or call 415-476-7864/Fax 415-476-5271.**

US Postal Service Mailing Address: <u>Use only for non-urgent ambient specimens- FFPEs, slides, blocks:</u>	Courier Address (FedEx, UPS, etc.): <u>For Frozen, Urgent or Trackable Specimens:</u>
NRG Oncology Biospecimen Bank- San Francisco UCSF- Box 1800 2340 Sutter St, room S341 San Francisco, CA 94143-1800	NRG Oncology Biospecimen Bank- San Francisco University of California San Francisco 2340 Sutter St, room S341 San Francisco, CA 94115 <u>415-476-3822</u>

**NRG Biospecimen Bank San Francisco:
FROZEN TISSUE KIT INSTRUCTIONS**

This Kit is for processing and shipping of frozen tissue specimens.

Kit contents:

- Biohazard pads/wipes 4" x 4" (orange)
- Five (5) 5-mL cryovials
- Disposable scalpel blades
- Disposable forceps
- Biohazard bags
- Absorbent shipping material
- Styrofoam container (inner)
- Cardboard shipping (outer) box
- Prepaid shipping label
- UN 3373 Label
- UN 1895 Dry Ice Sticker

Preparation and Processing of Fresh Frozen Tissue:

- On sterile cutting board, lay out the underpads.
- Keep biohazard wipes nearby to keep area clean throughout process.
- Label cryovials with NRG study number and case numbers
- Using provided disposable scalpel, evenly cut tissue into 3 to 5 separate pieces (Note: if a frozen core was obtained, do not cut but send it whole).
- Use forceps to place each piece of tissue into individual 5-mL cryovials.
- Snap freeze tissue samples in liquid nitrogen, a dry ice slurry (dry ice with 95% ethanol or isopentane), or directly on dry ice.
- Once frozen, place all of the cryovials into biohazard bag
- Use NRG provided labels to label the bag (provided when patient is registered)
- Indicate on Specimen Transmittal Form the storage conditions used and time stored.

Storage and Shipping:

Freezing and Storage

- Store at -80°C (-70°C to -90°C) until ready to ship. If a -80°C Freezer is not available, :
 - Samples can be stored in plenty of Dry Ice for up to one week, replenishing daily (please ship out on Monday-Wednesday only; Canada: Monday-Tuesday only).

OR:

- Samples can be stored in liquid nitrogen vapor phase (ship out Monday-Wednesday only; Canada: Monday-Tuesday only).

Shipping/Mailing:

- Include all study required paperwork in pocket of biohazard bag.
- Place specimens and the absorbent shipping material in Styrofoam cooler filled with dry ice (at least 7-10 lbs.—if appropriate; double-check temperature sample shipping temperature). Place Styrofoam cooler into outer cardboard box, and attach shipping label to outer cardboard box.
- Multiple cases may be shipped in the same cooler, but make sure each one is in a separate bag and clearly identified.*
- Send frozen specimens via overnight courier to the address below. Specimens should only be shipped Monday-Wednesday (Mon-Tues for Canada) to prevent thawing due to delivery delays.
- Saturday or holiday deliveries cannot be accepted. Store samples frozen until ready to ship.
- For Questions regarding collection/shipping or to order a Frozen Tissue Kit, please contact the Biospecimen Bank- by e-mail: NRGBB@ucsf.edu or call 415-476-7864/Fax 415-476-5271.

Courier Address (FedEx, UPS, etc.): For all Frozen Specimens
NRG Oncology Biospecimen Bank- San Francisco,
University of California San Francisco
2340 Sutter Street, Room S341, San Francisco, CA 94115

NRG Biospecimen Bank – San Francisco

BLOOD COLLECTION KIT INSTRUCTIONS

This Kit is for collection, processing, storage, and shipping of serum, plasma, or whole blood (as specified by the protocol):

Kit contents:

- One Red Top tube for serum (A)
- One Purple Top EDTA tube for plasma (B)
- One Purple Top EDTA tube for Whole Blood (C)
- Twenty-five (25) 1 ml cryovials
- Biohazard bags (3)
- Absorbent shipping material (3)
- Styrofoam container (inner) and Cardboard shipping (outer) box
- UN1845 DRY Ice Sticker and UN3373 Biological Substance Category B Stickers
- ST Form and Kit Instructions

PREPARATION AND PROCESSING OF SERUM, PLASMA AND WHOLE BLOOD:

(A) Serum (if requested): Red Top Tube

- Label as many 1ml cryovials (5 to 8) as necessary for the serum collected.
Label tubes with the NRG study and case number, timepoint, collection date and time, and clearly mark cryovials “serum”.

Process:

1. Allow one red top tube to clot for 30 minutes at room temperature.
2. Spin in a standard clinical centrifuge at ~2500 RPM for 10 minutes at 4°C (preferred). If sites are unable to process samples at 4°C then spinning at room temperature is acceptable if done within 2 hours of draw but must be noted on the ST Form.
3. Aliquot 0.5 ml serum into as many labeled cryovials as are necessary for the serum collected (5 to 8). Make sure tubes are labeled as specified above.
4. Place cryovials into biohazard bag and immediately freeze at -70 to -90° C. Store frozen until ready to ship. See below for storage conditions.

PLEASE make sure EVERY SPECIMEN IS LABELED and include collection time point on ST Form.

(B) Plasma (If requested): Purple Top EDTA tube #1

- Label as many 1ml cryovials (5 to 8) as necessary for the plasma collected.
Label tubes with the NRG study and case number, timepoint, collection date and time, and clearly mark cryovials “Plasma”

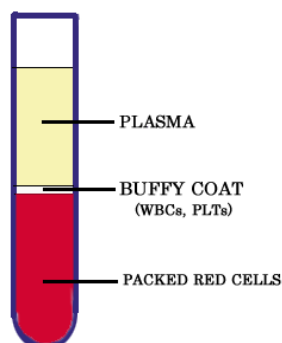
Process:

1. After collection, invert tube(s) multiple times to ensure adequate mixing of EDTA.
2. Centrifuge specimen(s) within one hour of collection in a standard clinical centrifuge at ~2500 RPM for 10 minutes at 4°C (preferred). If sites are unable to process samples at 4°C then spinning at room temperature is acceptable if done within 2 hours of draw but must be noted on the ST Form..
3. If the interval between specimen collection and processing is anticipated to be more than one hour, keep specimen on ice until centrifuging is performed.
4. Carefully pipette and aliquot 0.5 ml plasma into as many cryovials as are necessary for the plasma collected (5 to 8). Make sure tubes are labeled as specified above.
5. Place cryovials into biohazard bag and immediately freeze at -70 to -90° C. Store frozen until ready to ship on dry ice. See below for storage conditions.

PLEASE make sure EVERY SPECIMEN IS LABELED and include collection time point on ST Form.

(continued on next page)

NRG BLOOD COLLECTION KIT INSTRUCTIONS (continued)



(C) Whole Blood for DNA (if requested): Purple Top EDTA tube #2

- Label as many 1ml cryovials (3 to 5) as necessary for the whole blood collected. Label them with the NRG study and case number, collection date/time, and time point, and clearly mark cryovials "blood".

Process:

1. After collection, invert tube(s) multiple times to ensure adequate mixing of EDTA. Blood can also be mixed for 5 minutes on a mixer at room temperature.
2. Carefully pipette and aliquot 1.0 ml blood into as many labeled cryovials as are necessary for the blood collected (3 to 5). Make sure tubes are labeled as specified above.
3. Place cryovials into biohazard bag and immediately freeze at -70 to -90° C. Store frozen until ready to ship on dry ice. See below for storage conditions

PLEASE make sure EVERY SPECIMEN IS LABELED and include collection time point on ST Form.

Freezing and Storage:

- Freeze Blood samples in a -80°C Freezer or on Dry Ice or snap freeze in liquid nitrogen.
- Store at -80°C (-70°C to -90°C) until ready to ship.
 - If a -80°C Freezer is not available,
 - Samples can be stored short term in a -20°C freezer (non-frost free preferred) for up to one week (please ship out Monday-Wednesday only; Canada: Monday-Tuesday only).

OR:

- Samples can be stored in plenty of dry ice for up to one week, replenishing daily (please ship out on Monday-Wednesday only; Canada: Monday-Tuesday only).

OR:

- Samples can be stored in liquid nitrogen vapor phase (ship out Monday-Wednesday only; Canada: Monday-Tuesday only).
- Please indicate on Specimen Transmittal Form the storage conditions used and time stored.

Shipping/Mailing:

- Ship specimens on Dry Ice overnight **Monday-Wednesday (Monday-Tuesday from Canada)** to prevent thawing due to delivery delays. Saturday and holiday deliveries cannot be accepted.
- Include all required paperwork in sealed plastic bag taped on outside top of the Styrofoam box.
- Wrap frozen specimens of same type (i.e., all serum together, plasma together and whole bloods together) in absorbent shipping material and place each specimen type in a separate biohazard bag. Place specimen bags into the Styrofoam cooler and fill with plenty of dry ice (7-10 lbs/3.5kg minimum). **Add padding to avoid the dry ice from breaking the tubes.**
- Place Styrofoam coolers into outer cardboard box, and attach shipping label and UN3373 and UN1895 dry ice stickers to outer cardboard box. Fill out the UN1895 Label COMPLETELY.

(continued on next page)

NRG BLOOD COLLECTION KIT INSTRUCTIONS (continued)

- ❑ *Multiple cases may be shipped in the same cooler, but make sure each one is in a separate bag and that there is enough room for plenty of dry ice. **Add padding to avoid the dry ice from breaking the tubes.***
- ❑ For questions regarding collection, shipping or to order a Blood Collection Kit, please e-mail NRGBB@ucsf.edu or call (415) 476-7864.

Shipping Address:

Courier Address (FedEx, UPS, etc.): For all Frozen Specimens
NRG Oncology Biospecimen Bank- San Francisco
University of California San Francisco
2340 Sutter Street, Room S341
San Francisco, CA 94115
For questions, call 415-476-7864 or e-mail: NRGBB@ucsf.edu

NRG Biospecimen Bank

URINE COLLECTION KIT INSTRUCTIONS

This Kit is for collection, processing, storage, and shipping of urine specimens.

Kit Contents:

One (1) Sterile Urine collection cup	Two 15 ml polypropylene centrifuge tubes
Two 7 ml disposable pipettes	Biohazard bags
Absorbent paper towel	Parafilm for sealing outside of tubes

Preparation and Processing of Urine Specimens:

Process:

- A clean catch urine specimen will be collected. To collect the specimen, use the following instructions:
 - Males should wipe clean the head of the penis and females need to wipe between the labia with soapy water/cleansing wipes to remove any contaminants.
 - After urinating a small amount into the toilet bowl to clear the urethra of contaminants, collect a sample of urine in the collection cup.
 - After 10-25 mL urine has been collected, remove the container from the urine stream without stopping the flow of urine.
 - Finish voiding the bladder into the toilet bowl.
- Aliquot 5-10 mls of Urine into each of two 15 ml polypropylene centrifuge tubes (disposable pipets are provided in the kit). Do not fill with more than 10 mls to avoid cracking of tubes due to expansion during freezing. Replace the cap and tighten on the tubes. Make sure the cap is not cross-threaded or placed on incorrectly or leaking will occur.
- Use parafilm to seal the cap around the outside rim of the urine tube to prevent leakage.
- Discard remaining Urine and collection cup.
- Label the specimen with the NRG study and case number, collection date and time, time point of collection, and clearly mark specimens as "urine".
- Wrap Urine Tubes with absorbent material (paper towels) and place into biohazard bag and seal the bag. Freeze and store Urine samples in a -20°C or -80°C freezer until ready to ship.

PLEASE MAKE SURE THAT EVERY SPECIMEN IS LABELED with NRG study and case numbers, collection date/time, and time point collected (e.g. pretreatment, post-treatment).

Storage and Shipping:

Freezing and Storage:

- Urine specimens may be sent in batches or with other frozen biospecimens.
- Store at -80°C (-70°C to -90°C) until ready to ship. If a -80°C Freezer is not available:
 - Urine Samples can be stored short term in a -20° C freezer (non-frost free preferred) for up to two weeks (please ship out Monday-Wednesday only; Canada: Mon-Tues only).

OR:

- Samples can be stored in plenty of Dry Ice for up to one week, replenishing daily (please ship out Monday-Wednesday only; Canada: Monday-Tuesday only).
- Please indicate on Specimen Transmittal Form the storage conditions used and time stored.

Shipping/Mailing:

- Ship specimens on Dry Ice overnight **Monday-Wednesday (Monday-Tuesday from Canada)** to prevent thawing due to delivery delays. Saturday and holiday deliveries cannot be accepted.
- Include all NRG paperwork in a sealed plastic bag and tape on top of the Styrofoam box.
- Place sealed specimen bags into the Styrofoam cooler and fill with plenty of dry ice (7-10 lbs/3.5kg minimum). **Add padding to avoid the dry ice from breaking the tubes.**
- Place Styrofoam coolers into outer cardboard box, and attach shipping label and UN3373 and UN1895 stickers to outer cardboard box.

- ❑ *Multiple cases may be shipped in the same cooler, but make sure each one is in a separate bag and that there is enough room for plenty of dry ice. **Add padding to avoid the dry ice from breaking the tubes.***
- ❑ Samples received thawed will be discarded, and a notification will be sent immediately to the Principal Investigator and Clinical Research Assistant of the submitting institution. The institution should send a subsequent sample, collected as close as possible to the original planned collection date.
- ❑ **For questions regarding ordering, collection, or shipping of a Urine Collection Kit, please e-mail NRG_BB@ucsf.edu or call (415)476-7864 or fax (415) 476-5271.**

Shipping Address: FedEx/UPS/Courier address (For all frozen samples)

NRG Oncology Biospecimen Bank- San Francisco at UCSF

2340 Sutter Street, Room S341, San Francisco, CA 94115

Contact Phone: (415) 476-7864

NRG Biospecimen Bank
CEREBROSPINAL FLUID (CSF) COLLECTION KIT INSTRUCTIONS

This Kit is for collection, processing, storage, and shipping of CSF specimens. This Kit contains:

Five (5) 5mL cryovials	Biohazard bags
Parafilm	Sterile Disposable Pipette

Preparation and Processing of Cerebrospinal Fluid (CSF) Specimens:

A sterile CSF specimen will be collected according to individual site protocol.

After CSF specimen has been obtained, use the following instructions:

- Aliquot CSF using a sterile pipette into 5 different 5mL vials, each containing a minimum of 1mL
- If CSF is already frozen, perform a controlled thaw and aliquot specimens according to above instructions. Indicate on paperwork if specimen had to be thawed/refrozen.
- Label the specimens with the NRG study and case number, collection date and time, and clearly mark specimen as "CSF".
- Use parafilm to seal the aliquots and to prevent leakage.
- Place CSF aliquots into biohazard bag and seal the bag.
- Immediately freeze specimens at -20°C or -80°C and store frozen until ready to ship on Dry Ice.

PLEASE MAKE SURE THAT EVERY SPECIMEN IS LABELED with NRG study and case numbers, collection date/time, and time point collected (e.g. pretreatment, post-treatment).

Storage and Shipping:

Freezing and Storage:

- Store at -80°C (-70°C to -90°C) until ready to ship. If a -80°C freezer is not available:
 - Samples can be stored short term in a -20°C freezer (non-frost free preferred) for up to one week (please ship out Monday-Wednesday only; Canada: Monday-Tuesday only).
- OR:**
 - Samples can be stored in plenty of Dry Ice for up to one week, replenishing daily (please ship out on Monday-Wednesday only; Canada: Monday-Tuesday only).
- OR:**
 - Samples can be stored in liquid nitrogen vapor phase (ship out Monday-Wednesday only; Canada: Monday-Tuesday only).
- Please indicate on Specimen Transmittal Form the storage conditions used and time stored.

Shipping/Mailing:

- Ship specimens on Dry Ice overnight **Monday-Wednesday (Monday-Tuesday from Canada)** to prevent thawing due to delivery delays. Saturday and holiday deliveries cannot be accepted.
- Include all NRG paperwork in a sealed plastic bag and tape to outside top of the Styrofoam box.
- Place sealed specimen bags into the Styrofoam cooler and fill with plenty of dry ice (7-10 lbs/3.5kg minimum). **Add padding to avoid the dry ice from breaking the tubes.**
- Place Styrofoam coolers into outer cardboard box, and attach shipping label and UN3373 and UN1895 stickers to outer cardboard box.
- *Multiple cases may be shipped in the same cooler, but make sure each one is in a separate bag and that there is enough room for plenty of dry ice. Add padding to avoid the dry ice from breaking the tubes.*
- For questions regarding ordering, collection, or shipping of a CSF Collection Kit, please e-mail **NRGBB@ucsf.edu** or call 415-476-7864 or Fax 415-476-5271.

Shipping Address: FedEx/UPS/Courier address (all courier packages & frozen samples)
NRG Oncology Biospecimen Bank- San Francisco

UCSF
2340 Sutter Street, Room S341,
San Francisco, CA 94115

NRG Oncology Biospecimen Bank
BUCCAL SCRAPINGS SPECIMEN KIT INSTRUCTIONS

This Kit is for collection, processing, storage, and shipping of Buccal Specimens.

Kit Contents

- One screw-top container filled with RNAlater
- Buccal brush/swab
- Biohazard bags
- Absorbent shipping material
- Styrofoam container (inner)
- Cardboard shipping (outer) box
- Return shipping label
- Specimen Transmittal Form (STF)

Preparation and Processing of Buccal Scrapings:

- Brush or swab the oral mucosa generously to collect cells.
- The swab with the specimen will then be placed into a cup/vial with RNAlater solution.
- Swish the swab in the solution to free the cells.
- The handle of the swab may be cut or bent to fit into the container.
- The specimen should then be stored frozen at -70 ° to -80° Celsius until ready to ship.

PLEASE MAKE SURE THAT EVERY SPECIMEN IS LABELED with NRG study and case numbers, collection date/time, and time point collected (e.g., pretreatment, post-treatment).

Storage and Shipping:

Freezing and Storage:

- ❑ Store at -80°C (-70°C to -90°C) until ready to ship. If a -80°C freezer is not available:
 - Samples can be stored short term in a -20° C freezer (non-frost free preferred) for up to one week (please ship out Monday-Wednesday only; Canada: Monday-Tuesday only).
- OR:**
 - Samples can be stored in plenty of Dry Ice for up to one week, replenishing daily (please ship out on Monday-Wednesday only; Canada: Monday-Tuesday only).
- OR:**
 - Samples can be stored in liquid nitrogen vapor phase (ship out Monday-Wednesday only; Canada: Monday-Tuesday only).
- ❑ Please indicate on Specimen Transmittal Form the storage conditions used and time stored.

Shipping/Mailing:

- ❑ Ship specimens on Dry Ice overnight **Monday-Wednesday (Monday-Tuesday from Canada)** to prevent thawing due to delivery delays. Saturday and holiday deliveries cannot be accepted.
- ❑ Include all NRG paperwork in a sealed plastic bag and taped on outside top of the Styrofoam box.
- ❑ Place sealed specimen bags into the Styrofoam cooler and fill with plenty of dry ice (7-10 lbs/3.5kg minimum). **Add padding to avoid the dry ice from breaking the tubes.**
- ❑ Place Styrofoam coolers into outer cardboard box, and attach shipping label and UN3373 and UN1895 stickers to outer cardboard box. Fill out the UN1895 completely
- ❑ *Multiple cases may be shipped in the same cooler, but make sure each one is in a separate bag and that there is enough room for plenty of dry ice.*
- ❑ For questions regarding ordering, collection, or shipping of a Buccal Collection Kit, please e-mail NRGBB@ucsf.edu or call 415-476-7864 or Fax 415-476-5271.

Shipping Address: FedEx/UPS/Courier address (all courier packages & frozen samples)
NRG Oncology Biospecimen Bank- San Francisco
UCSF
2340 Sutter Street, Room S341
San Francisco, CA 94115